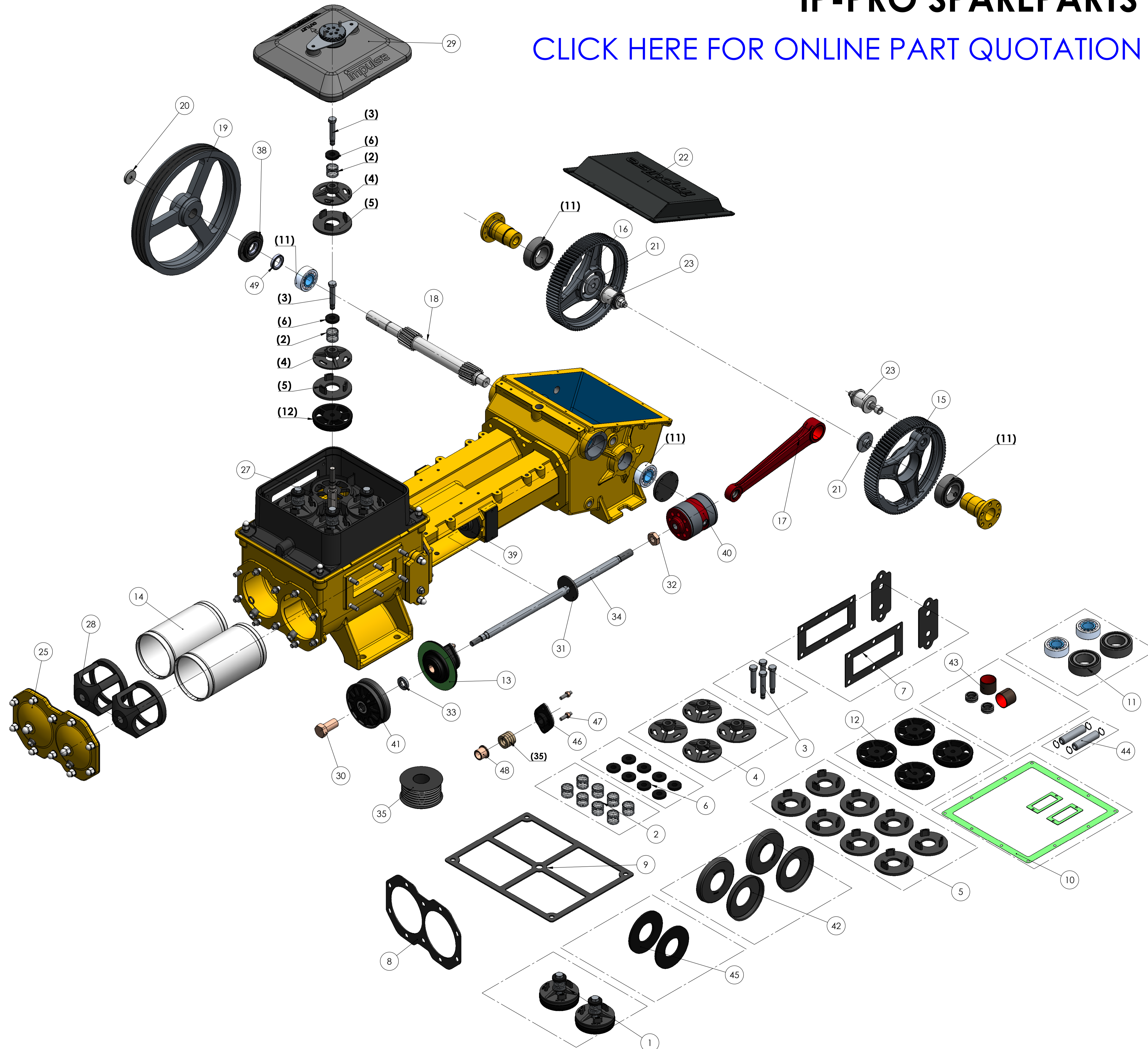


IP-PRO SPAREPARTS

[CLICK HERE FOR ONLINE PART QUOTATION](#)



ITEM NO.	PART NUMBER	DESCRIPTION
1	33723	SUCTION VALVE SET (2x) IP-175
2	33717	VALVE SPRING SET
3	33715	VALVE STAM GUIDE SCREW SET IP-175 (4x)
4	33718	VALVE WEIGHT SET IP-175 (4x)
5	33719	VALVE RUBBER SET IP-175 (8x)
6	33716	VALVE SPRING WASHER SET
7	33800	GASKET SEAL SET IP-PRO
8	30979	Gasket Cilinder Liner Cover IP-PRO
9	30970	Gasket Valve Housing IP-PRO (45 shore x 5 mm)
10	33802	GEARBOX GASKET SET IP-PRO
11	33807	ROLLER BEARING SET IP-PRO
12	34833	SUCTION VALVE SEAT SET (4x)
13	32638	GLAND PACKING HOUSE COMPLETE BA-U FIBRE GASKET
14	33712	CYLINDER LINER IP-175 WITH O-RINGS
15	31044	Toothed Wheel Side A IP-PRO
16	31045	Toothed Wheel Side B IP-PRO
17	34999	CONNECTING ROD IP-PRO WITH BEARINGS
18	30961	Pinion Shaft IP-PRO Pulley Side B
19	20322	V-Belt Pulley SPB OD 505 mm - ID 40 mm
20	20328	Pulley Protection Plate
21	31048	Bearing Lock Washer Toothed Wheel
22	33809	GEARBOX COVER IP-PRO WITH GASKET
23	33804	CONNECTING ROD STOP SHAFT (GEARWHEEL)
24	31058	Valve House Support Washer
25	34900	CYLINDER COVER IP-PRO WITH GASKET
26	20288	Gasket Stone Box Square Window
27	32839	KING PIN IP-PRO COMPLETE
28	32840	DISTANCE PIECE IP-175 / IP-PRO
29	32838	IP-PRO PUMPHOUSE COVER COMPLETE
30	30984	Piston Lock Nut IP-PRO
31	20339	Drip Catcher Ring
32	20336	Cross Head Lock Nut
33	30985	Backside Piston Body Support Plate
34	30983	Piston Rod M27 IP-PRO
35	34529	Gland Packing Roll 1 kg 10 x 10 mm
36	20303	DISCHARGE VALVE COMPLETE
37	20289	SUCTION VALVE COMPLETE
38	34935	BEARING COVER OPEN IP-PRO WITH O-RING
39	20348	DUST CAP COMPLETE IP-175
40	20329	CROSS HEAD IP-175 COMPLETE
41	34838	PISTON COLLAR REPLACEMENT SET IP-175
42	35198	PISTON COLLAR SET (4x) IP-175
43	35204	CONNECTION ROD BEARING SET IP-PRO
44	34840	CROSS HEAD PIN SET IP-175 (2x)
45	35199	PISTON INTERMEDIATE DISK SET (2x) IP-175
46	20276	GLAND PACKING FLANGE COMPLETE GFN
47	35200	GLAND PACKING FLANGE STUD BOLT & NUT
48	20274	Piston Rod Guide Bush
49	20344	Oil Seal 40 x 60 x 10

Revision information					format	scale	projection	impulse	
Rev	Date	Drn	Appr	Info	A1	1:7	1st	Deewatering Technologies	
A	23-01-2025	JG	JG		Drawn	JG		Title: IP-PRO 175 PUMP EXPLODED VIEW	
-	21-01-2025	JG	-		Date	05-12-2024	No.	34895	Rev. A
					Weight	541.05 Kg	Material		
					State	Approved	Treatm.		Assemble

UNSPECIFIED GEOMETRICAL TOLERANCES SHALL CONFORM TO ISO 2768-MK (UNLESS OTHERWISE STATED)

IP-PRO 175 PUMP EXPLODED VIEW

All rights reserved. Reproduction or use in any form without the written permission of the proprietor. Property of Impulse Pumps B.V. Copyright Impulse Pumps B.V.