



ecomizerpro

SOFTWARE UPDATE



impulse

HMI SOFTWARE UPDATE

Loading and Updating Software via Ecomizer-Pro Toolkit

This guide describes how to install or update software on the HMI PV700 display unit used in Impulse Ecomizer-Pro systems. Two methods are covered: uploading via the Ecomizer-Pro Toolkit (M12 LAN) and uploading via a USB flash drive.

Software needs to be updated to the latest available software versions as mentioned on the website from Impulse. All pumps can be updated to the latest available software versions to improve efficiency of the machines.

⚠ Warning: This procedure cannot be performed remotely. A physical connection between a Windows laptop and the HMI unit is required.

Note: Updates can only be done with the correct hardware-tools. Refer to the impulse website item number: 36844

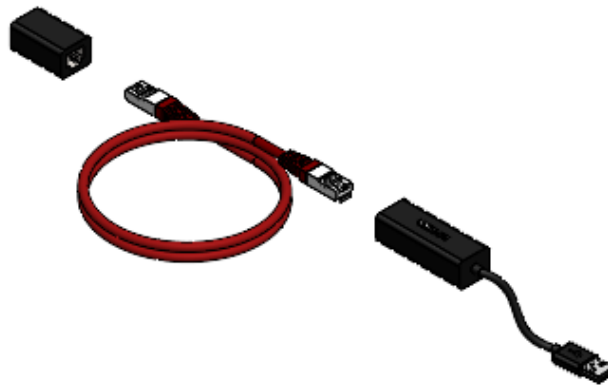


Figure 1:

Itemcode: 36844

⚠ ATTENTION!

Impulse always recommend updating all machines to the latest available software versions.

Table of Contents

1	ECOMIZER-PRO TOOLKIT (M12 LAN CABLE)	3
1.1	Connecting the HMI to Your Laptop	3
1.2	Troubleshooting: No Connection Established	3
2	METHOD A: UPLOADING SOFTWARE VIA THE ECOMIZER-PRO TOOLKIT	5
2.1	Step-by-Step Upload Procedure	5
2.2	After the Upload is Complete	6
3	METHOD B: UPLOADING SOFTWARE VIA USB FLASH DRIVE	7
3.1	USB Flash Drive Requirements	7
3.2	Activating the Bootloader	7
3.3	Uploading via USB	8
3.4	After the Upload is Complete	10
4	POST-UPLOAD CONFIGURATION	11
4.1	Required Settings After Every Software Upload	11
4.2	Error code (303)	11
5	CONTACT & SUPPORT	12

1 Ecomizer-Pro Toolkit (M12 LAN Cable)

1.1 Connecting the HMI to Your Laptop

Connect the HMI display to your windows laptop using the **M12 LAN cable** from HMI and a USB-to-LAN adapter. The adapter **must** use an **ASIX AX88772 chipset** (refer to the article number 36844 on the Impulse website).

Note: An alternative connection via a network switch or the routers WAN/LAN port is also in most of the times possible, provided that the router is configured in the versions before V2.9 to allow this.

Router firmware V2.9 or higher, can always use the routers WAN/LAN for software update of HMI.

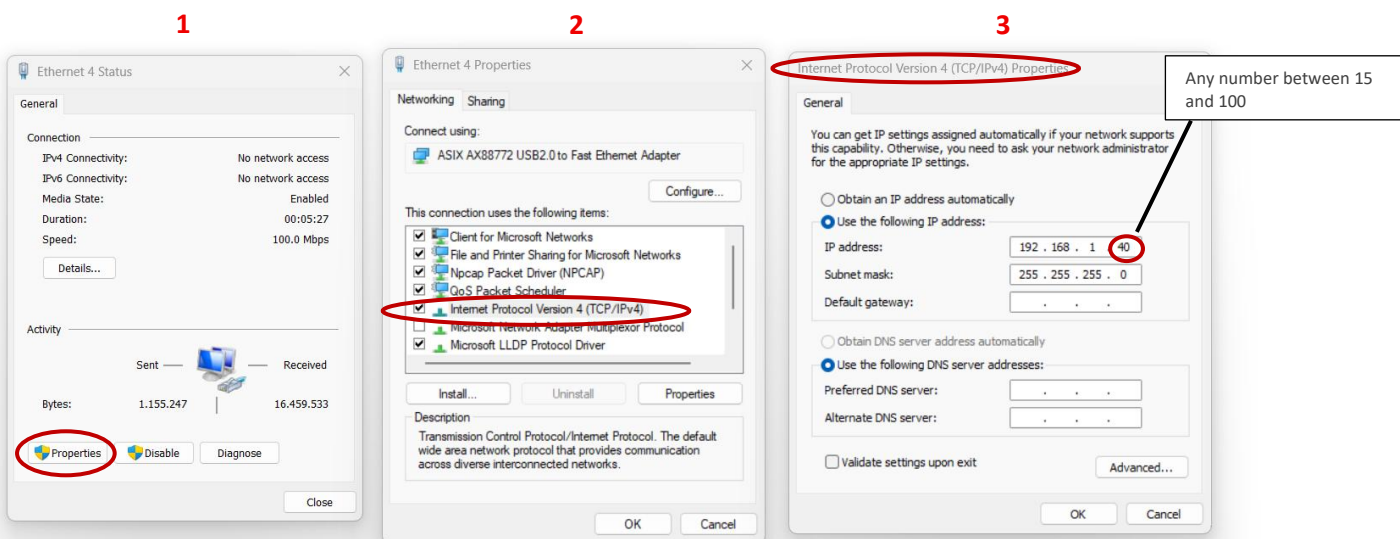
Versions can be checked on Ecomizer-pro cloud platform: <https://remote.ecomizerpro.com>

Once the cable is connected, open the **Ecomizer-Pro Toolkit**. The HMI screen will appear directly on your laptop display. Confirm that the Ecomizer-Pro logo is displayed in **green**, indicating an active connection.

1.2 Troubleshooting: No Connection Established

If the connection cannot be established, the laptop's network adapter must be configured with a fixed IP address. Follow these steps:

1. Open **Network Connections** on your Windows laptop.
2. Locate the adapter connected to the HMI (ASIX AX88772 chipset) and open its properties.
3. Select **Internet Protocol Version 4 (TCP/IPv4)** and click Properties.
4. Select **Use the following IP address** and enter the settings shown below.



Refer to the Network Connections screenshot above for the correct settings. The IP address configuration dialog is shown on the right-hand side.

IP Address	192 . 168 . 1 . 40*
Subnet Mask	255 . 255 . 255 . 0

*= 40 or any number between 15 and 100

5. Click **OK** to apply the settings, then open the Ecomizer-Pro Toolkit. The connection will now be established.

Note: If you used a fixed IP-address, don't forget to reset "Obtain an IP address automatically" after the software update

Obtain an IP address automatically

2 Method A: Uploading Software via the Ecomizer-Pro Toolkit

⚠ Warning: Make sure that the system is powered and will remain on during the whole upload procedure.

2.1 Step-by-Step Upload Procedure

1. Open the **Ecomizer-Pro Toolkit** and navigate to **Tools → Tools**.

Ecomizer-Pro Toolkit

Remote **Tools** About

Events **Tools** Files

● **Connected** | 123456A-26001122 • Impulse_SIP_CAN_V22-0

DEVICE ACTIONS

Reboot Device

Reboot Economizer Pro

Reboot

Update Software

Load .pv2 file to device

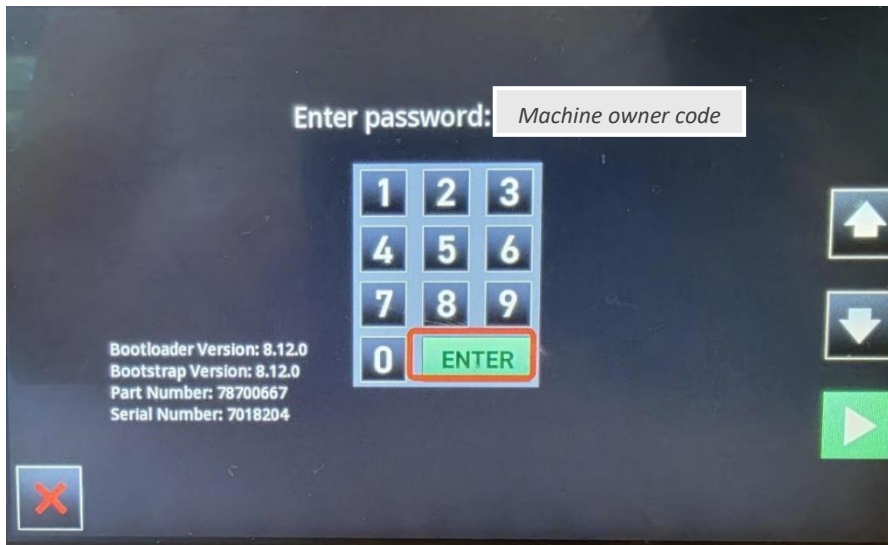
Select File

2. Under **Update Software**, click **Select File** and browse to the latest software version downloaded from the Impulse website.

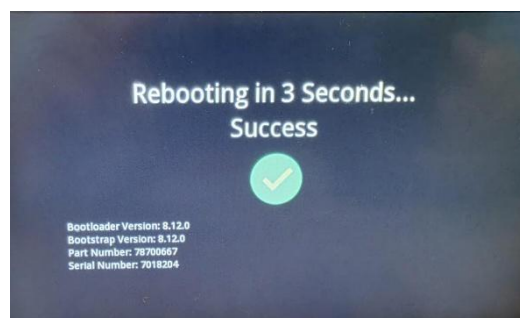
Note: The file downloaded from the Impulse website is a **.rar** archive. Before selecting it, right-click the file and choose **“Extract files”** to unpack it. If you cannot open the archive, download and install **WinRAR** from www.win-rar.com. After extraction, the software file will be available as a **.PV2** file.

3. Once the file is selected, the HMI starts with installing the software.
4. To proceed you need to enter the **owner password** on the HMI. Use the up/down arrow buttons on the HMI display to enter the machine owner code, press each time the green arrow button for confirming the selection that has been made.

- As soon as owner code has been completed, select ENTER to confirm the machine owner code.



- The upload process will begin automatically.



The HMI display will show the upload progress: **Verifying Install Package** → **Updating Bootstrap** → **Updating Configuration** → **Rebooting – Success**.

2.2 After the Upload is Complete

After a successful upload via the Ecomizer-Pro Toolkit, proceed to **restart the screen**: Turn the OFF-ON-Start switch to off, wait a couple of seconds, and restart the screen

3 Method B: Uploading Software via USB Flash Drive

Software can also be loaded onto the HMI directly via a USB flash drive.

3.1 USB Flash Drive Requirements

Only use a good-quality flash drive. Low-quality drives may not be recognised by the HMI, causing the upload to fail.

- **File system:** FAT32
- **Minimum capacity:** 2 GB
- **Type:** Flash drive (not a USB disk/UDISC)
- **Interface:** USB 2.0 or USB 3.0

3.2 Activating the Bootloader

Before a USB upload can begin, the HMI must be placed into Bootloader mode.

Via Magnet:

1. Disconnect the screen from power, by pulling the (yellow) 20A fuse.
2. Hold a magnet against the designated recess on the rear of the HMI display.

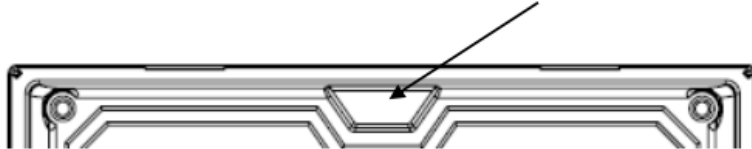


Figure 2; Backside of HMI- screen.

3. While holding the magnet in place, reconnect the 20A fuse and power-up the system.
4. Wait until the display lights up. **PLEASE NOTICE** this takes 1 minute(!)
5. The HMI will enter bootloader mode automatically.

The HMI screen will display the message **“Waiting for Connection or USB”** when bootloader mode is active.

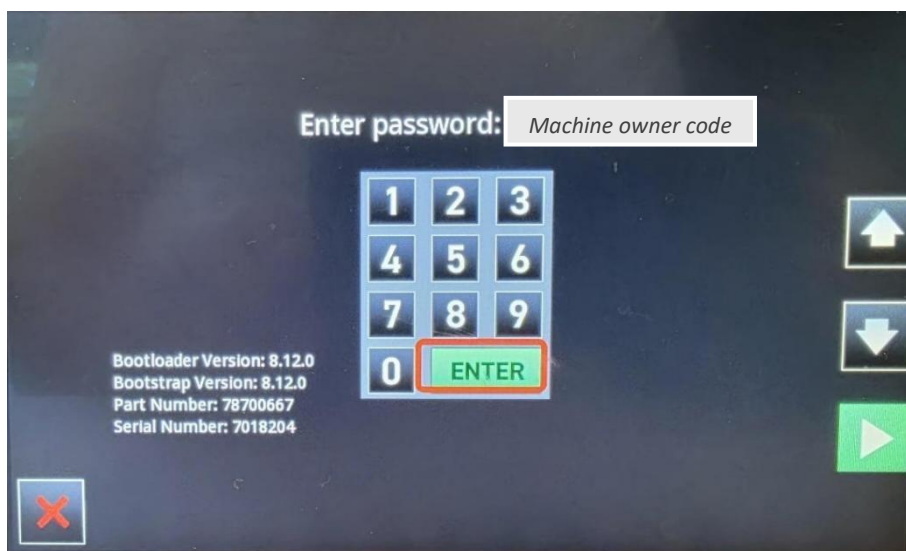


3.3 Uploading via USB

1. Insert the prepared USB flash drive into the USB port on the rear of the HMI.



2. The HMI will automatically detect the drive and display the available software files.
3. Select the correct software file and confirm the upload.



4. To proceed you need to enter the **owner password** on the HMI. Use the up/down arrow buttons on the HMI display to enter the machine owner code, press each time the green arrow button for confirming the selection that has been made.

5. As soon as owner code has been completed, select ENTER to confirm the machine owner code.
6. The upload process will begin automatically.



3.4 After the Upload is Complete

After a successful upload via the Ecomizer-Pro Toolkit, proceed to **restart the screen**: Turn the OFF-ON-Start switch to off, wait a couple of seconds, and restart the screen

7. Wait for the upload process to complete. The HMI will reboot automatically.

Note: If the HMI don't show the software files, make sure that the software files are in the root of USB (software can't be placed in a folder on the USB flash drive)

4 Post-Upload Configuration

4.1 Required Settings After Every Software Upload

After successfully uploading new software to the HMI, the following configuration steps must always be completed:

- **Check software version:** on info-page of HMI if it is the same of the software version uploaded.
- **Serial numbers and unit numbers:** Verify that all serial numbers and set numbers are correct.
- **Info screen:** Set the correct date/time.

4.2 Error code (303)

HMI screens giving an error code 303 during uploading of the software can't be updated. In this occasion please contact Impulse for support.

5 Contact & Support

For technical assistance, contact Impulse Pumps B.V.:

Address	Arendsenweg 9, 7021 PC Zelhem, The Netherlands
Telephone	+31 (0)314 64 12 88
E-mail	info@impulsebv.com
Website	www.impulsebv.com

Disclaimer

Impulse Pumps B.V. accepts no responsibility or liability for any issues, malfunctions, or claims arising from the use or failure of the software upload process or any associated connections.

All assignments are carried out in accordance with the general terms and conditions of delivery registered with the Chamber of Commerce in Arnhem, The Netherlands. Terms are available at www.impulsebv.com.

ABN-Amro: 40.65.63.705 · IBAN: NL02ABNA0406563705 · BIC: ABNANL2A · BTW-nr.: NL 8170.35.096.B01 · KvK Arnhem-nr.: 09163688