



**ecomizer**pro

# SET-UP



**impulse**

## INTRODUCTION



## Smart Control for Your Impulse Pump

The Ecomizer-Pro controller is an intelligent pump management system, in house developed by Impulse. It enables you to monitor and control your Impulse pump efficiently — not only on-site, but also remotely, from anywhere in the world, at any time.

This manual describes how the Ecomizer-Pro system works, how to set it up, and how to use its remote access features.



# 1 Remote Access

## 1.1 Standard Remote Functionality

Every new Impulse SIP-Series pump equipped with Ecomizer-Pro is delivered with remote access as standard. This feature was originally developed to allow Impulse engineers to provide fast, efficient remote support. Today, it is widely used by customers for their own monitoring and control operations.

**Remote access is completely free of charge and standard equipped in the Impulse SIP-Series range.**

With the Ecomizer-Pro, you can establish a VPN connection to your equipment 24 hours a day, 7 days a week, ensuring all advantages as if you are standing in front of the machine.

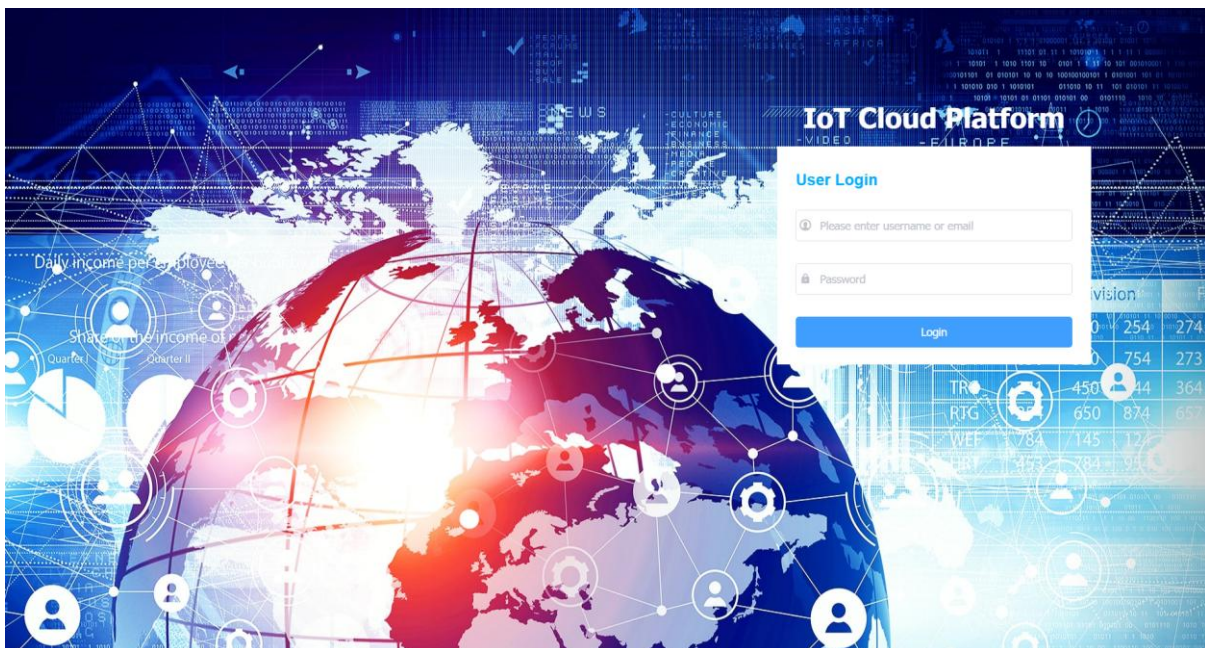
## 1.2 IoT Cloud Platform

Every pump provided with Ecomizer-Pro pump controller can be found on the Ecomizer-Pro-IoT Cloud Platform:

[remote.ecomizerpro.com](https://remote.ecomizerpro.com)

After login this platform gives you an overview of all your Impulse pumps and allows you to manage your entire Ecomizer-Pro fleet remotely. A direct cloud-to-pump connection is currently in development and will be available soon for even more convenient access.

**Note:** Please contact Impulse Pumps BV to receive your personal login credentials.



## 2 Getting Started

### 2.1 Required Software

To connect to your Ecomizer-Pro equipped pump from a Windows computer, you need to install two software packages. Both are free available at: [www.impulsebv.com/download](http://www.impulsebv.com/download)

- **SuperLink** – Establishes a secure VPN connection between your computer and the pump's internal router.

File name:	Impulse_EcomizerPro_SuperLink_V2.2.7 (1)
Save as type:	WinRAR ZIP-archief

- **EcomizerPro Toolkit** – Provides access to the Ecomizer-Pro touchscreen interface, enabling real-time control and data visibility.

File name:	EcomizerPro.Toolkit-V00-02
Save as type:	WinRAR ZIP-archief

## 2.2 Installation Instructions

1. Download both software packages from [www.impulsebv.com/download](http://www.impulsebv.com/download)
2. **Extract the downloaded files using your archive tool** (see the note below if you encounter issues).
3. Install both SuperLink and EcomizerPro Toolkit on your Windows computer.
4. Launch SuperLink to establish the VPN connection to the pump.
5. Open EcomizerPro Toolkit to access the Ecomizer-Pro interface.

**Note:** If you experience problems extracting the downloaded files (SuperLink and EcomizerPro Toolkit), please download and install WinRAR, which can open these archive formats. WinRAR is available at: [www.win-rar.com](http://www.win-rar.com) (**Do NOT** purchase but select the blue download button).

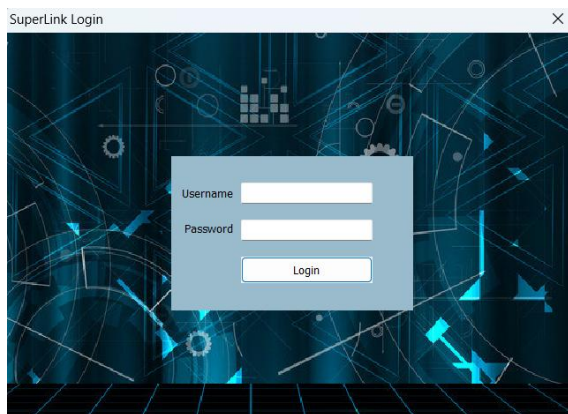


Figure 2; Login screen SuperLink

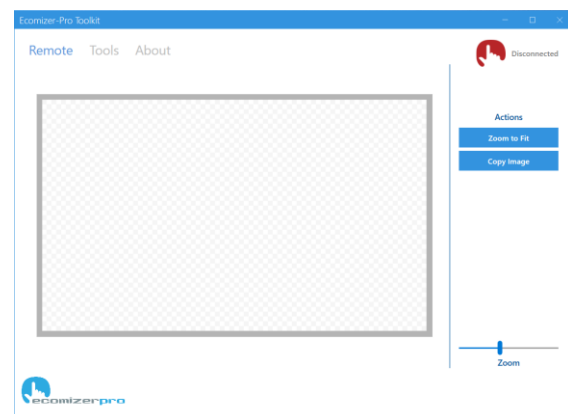


Figure 2; Screen Ecomizer-Pro Toolkit

**Note:** Please contact Impulse Pumps BV to receive your personal login credentials.

## 3 M2M SIM Card of 1NCE

All pumps with Ecomizer-Pro controllers are standard equipped with a M2M SIM-card of 1NCE. The SIM-card is needed to establish the connection everywhere via the strongest available network (4G/5G) without any restrictions of the network provider.

Impulse Pumps BV have made registration of your company at the platform of 1NCE.

After the registration of your SIM on the platform of 1NCE you will get an email with a link where you can set your own username and password for your own login on their website.

### 3.1 Always Connected

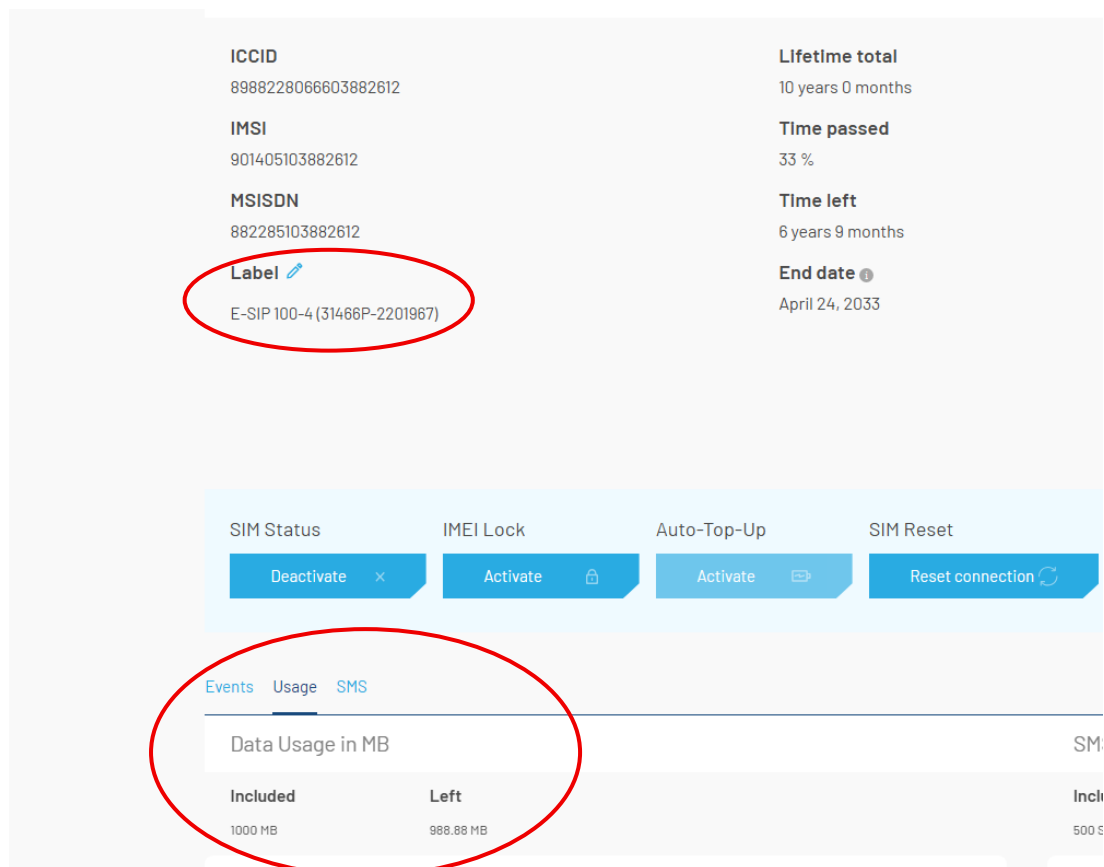
The 1NCE SIM card as provided in your machine automatically connects to the strongest available mobile network in your area.

### 3.2 Login on your 1NCE cloud portal and maintain your data.

Go to: <https://portal.1nce.com/en/portal/customer/login>

Here you login with the credentials as have been provided to you by the email of 1NCE  
 After login, you will find an overview of all your SIM-cards registered by 1NCE under your account.  
 On this platform you can see directly an overview of your SIM card with data, LOW data, and NO Volume.

**Note:** If you select your SIM card you can give the card his own label. (normally the equipment number of your machine) also you can directly see the data available of the card.



### 3.3 Data & Costs

- The SIM card comes pre-loaded with **500 MB of data** at the time of delivery.
- **No monthly subscription fees** apply. Data is only consumed when an active remote session is running.
- **TOP-UP** of data (500 Mb per occasion) can easily done on the 1NCE site. By “normal use” this 500 Mb is good for 2 till 3 month of use if you should connect a couple of times per week.

### 3.4 Managing Your own SIM Data

You can always view your current data usage and top up your SIM card at any time through the **1NCE portal**:

[portal.1nce.com](http://portal.1nce.com)

## 4 Technical Support

### 4.1 Contact Impulse Pumps B.V.

Our support team is available to assist you with any questions or technical issues.

Address	Arendsenweg 9, 7021 PC Zelhem, The Netherlands
Telephone	+31 (0)314 64 12 88
E-mail	<a href="mailto:info@impulsebv.com">info@impulsebv.com</a>
Website	<a href="http://www.impulsebv.com">www.impulsebv.com</a>

#### Disclaimer

*Impulse Pumps B.V. accepts no responsibility or liability for any issues, malfunctions, or claims arising from the use or failure of the remote connection to the pump.*

*All assignments are carried out in accordance with the general terms and conditions of delivery registered with the Chamber of Commerce in Arnhem, The Netherlands. Terms are available at [www.impulsebv.com](http://www.impulsebv.com).*

ABN-Amro: 40.65.63.705 · IBAN: NL02ABNA0406563705 · BIC: ABNANL2A · BTW-nr.: NL 8170.35.096.B01 · KvK Arnhem-nr.: 09163688